

**High Quality Clear Image !**  
**Can be used without removing from carry case !**  
**Compact design !**

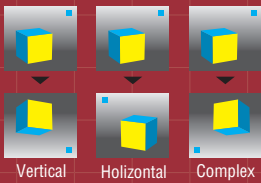
# Clear Scope Eco

To inspect various kinds of pipes such as drain pipes, plant pipes, gutterings, etc.



### Easy to use

- Can be used without removing from carry case.
- Easy to carry with a shoulder strap.



### Image reversal function

- 3 ways of reversing images.



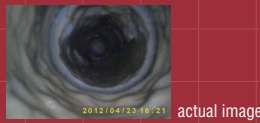
### Display angle adjustment

- Display angle is adjustable for comfortable working.



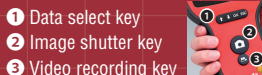
### LCD Monitor

- Image / Video : 300,000 pixel



### Operation keys

- Easy to record and play images / videos with simple operation keys.



### Digital zoom system

- Single action digital zoom 2x.

### SD card · AC adapter

- Charge by AC adapter.
- SD card (2GB) video - 200 mins / image - 30,000 photos.

For checking inside of pipes to locate blockages

## Clear Scope Eco 2515

100V~240V : Code No. TH2515E

Head diameter : 25mm  
Cable length : 15m

Applicable pipe size  
ø30 ~ 100mm

Image reversal function

2 × Digital Zoom function

Small sized head, ø25mm.

Illuminate dark tubes with white LED light.



**Light weight · Compact !**  
**HighSpec model !!**



Battery	Li · Polymer Battery (2hours charge for 4hours use) ※ Voltage made to order
Camera	Head diameter : ø25mm / Cable length : 15m
Applicable pipe size	Straight pipes : ø30mm ~ 100mm, Bent pipes : ø40mm ~ 100mm
Visible angle	73°
Focus distance	5 ~ 60cm
Display	3.5 TFT colour LCD / Resolution : 320 × 240 pixels
Weight	4.8kg
Saving format	Image · JPEG (300,000 pixels) / Video · AVI (300,000 pixels)
Storage medium	SD card (Max. 32GB)
External output	USB, AV
Waterproof function	Depth 10m
Standard Accessories	Clear scope, Camera cable 2515, AC adapter, Mini USB cable, AV cable, SD card 2GB, Cable drum, Shoulder strap, Carrying case

※ For ø100mm pipe, Centering Guide P76 (optional) is necessary.

For checking inside of pipes

## Clear Scope Eco 2505

100V~240V : Code No. **TH2505E**

Head diameter : 25mm Cable length : 5m	Applicable pipe size ø40 ~ 100mm	Image reversal function	2× Digital Zoom function
---	-------------------------------------	-------------------------	--------------------------

Light weight, 2.4kg - easy to carry to work places.  
Easy recording and playing back at work sites.



**Newly developed drum mechanism !!**  
**Compact - easy to carry !**

Battery	Li - Polymer Battery (2hours charge for 4hours use) ※ Voltage made to order
Camera	Head diameter : ø25mm / Cable length : 5m (minmum bending radius : 90mm)
Applicable pipe size	Straight pipes : ø30mm ~ 100mm, Bent pipes : ø40mm ~ 100mm
Visible angle	73°
Focus distance	5 ~ 60cm
Display	3.5 TFT colour LCD / Resolution : 320×240 pixels
Weight	2.4kg (including motor & drum)
Saving format	Photo : JPEG (300,000 pixels) Video : AVI (300,000 pixels) / SD card (max. 32GB)
External output	USB, AV
Standard Accessories	Clear scope, Camera cable 2505, Drum, AC adaptor, Mini USB cable, AV cable, SD card 2GB, Carrying Case

※ For ø100mm pipe, Centering Guide P76 (optional) is necessary.



※ Drum doesn't rotate.

### Camera cable 2505

Applicable pipe size : ø40 ~ 100mm  
Head diameter : ø25mm  
Cable length : 5m

Code No. **TH280**

### Drum set

Applicable pipe size : ø40 ~ 100mm  
Head diameter : ø25mm  
Cable length : 5m

Code No. **TH281**

### Camera Cable

## Clear Scope Cable (Flexible)

The ultra soft cable can be smoothly inserted into traps.

Code No.	<b>TH010</b>	<b>TH012</b> made to order	<b>TH013</b> made to order	<b>TH015</b> made to order	<b>TH011</b> made to order
Camera diameter	ø5.5mm	ø5.5mm	ø5.5mm	ø5.5mm	ø5.5mm
Cable length	1m	2m	3m	5m	10m



### Camera Cable

## Clear Scope Cable (Interlock)

Interlock type holds desired bent shapes.

Code No.	<b>TH011S</b>	<b>TH013S</b>	<b>TH401SF</b>	<b>TH401LF</b>
Camera diameter	ø5.5mm	ø5.5mm	ø10mm	ø10mm
Cable length	1m	3m	1m	1m
Focus distance	—	—	Near focus 2 ~ 8cm	Far focus 8 ~ 100cm

